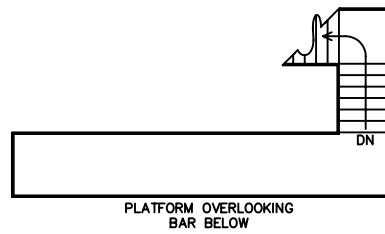
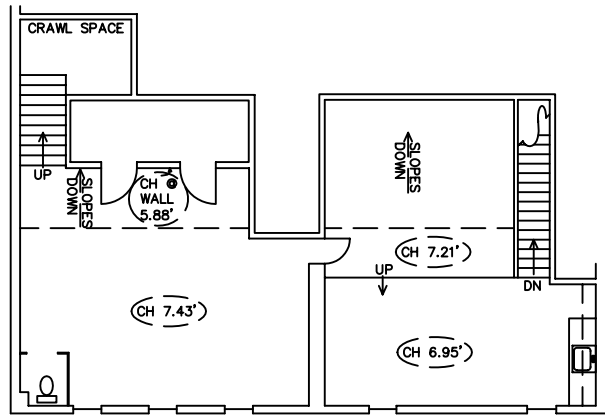


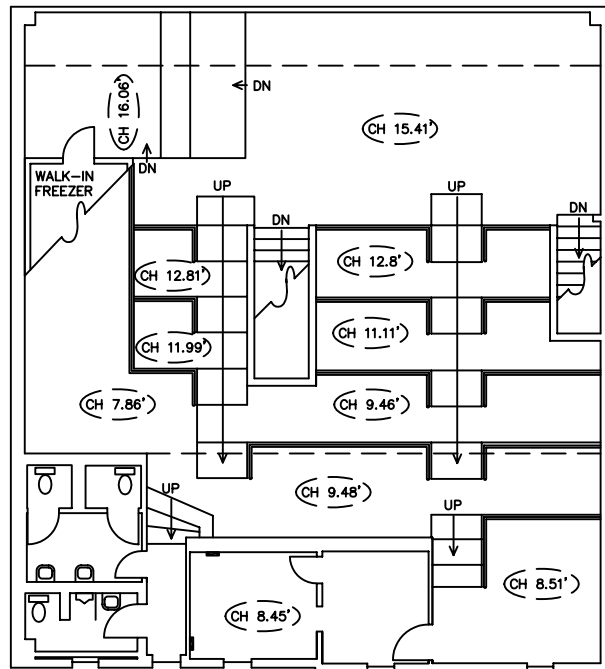
FIRST FLOOR



PLATFORM OVERLOOKING
BAR BELOW



MEZZANINE



SECOND FLOOR
RITZ LOUNGE

NOT TO SCALE

Drawing for:
WEISS
ARCHITECTURE
Austin, Texas 78704

RITZ THEATRE
320 E. 6th St.
Austin, Texas
TOTAL MSRDR AREA: X,XXX S.F.

THE MEASUREMENTS AND
FLOOR PLANS ARE ACCURATE
TO WITHIN 2% INTERIOR WALLS
AND DEMISING WALLS ARE
VARYING THICKNESSES.
Project No.: 20709.01
Date: March 2, 2007
©2007

DIMENSIONS
FLOOR PLANS
5900 Balcones Dr., Ste. 180
Austin, Texas 78731
Phone: 342-0114 Fax: 342-1965